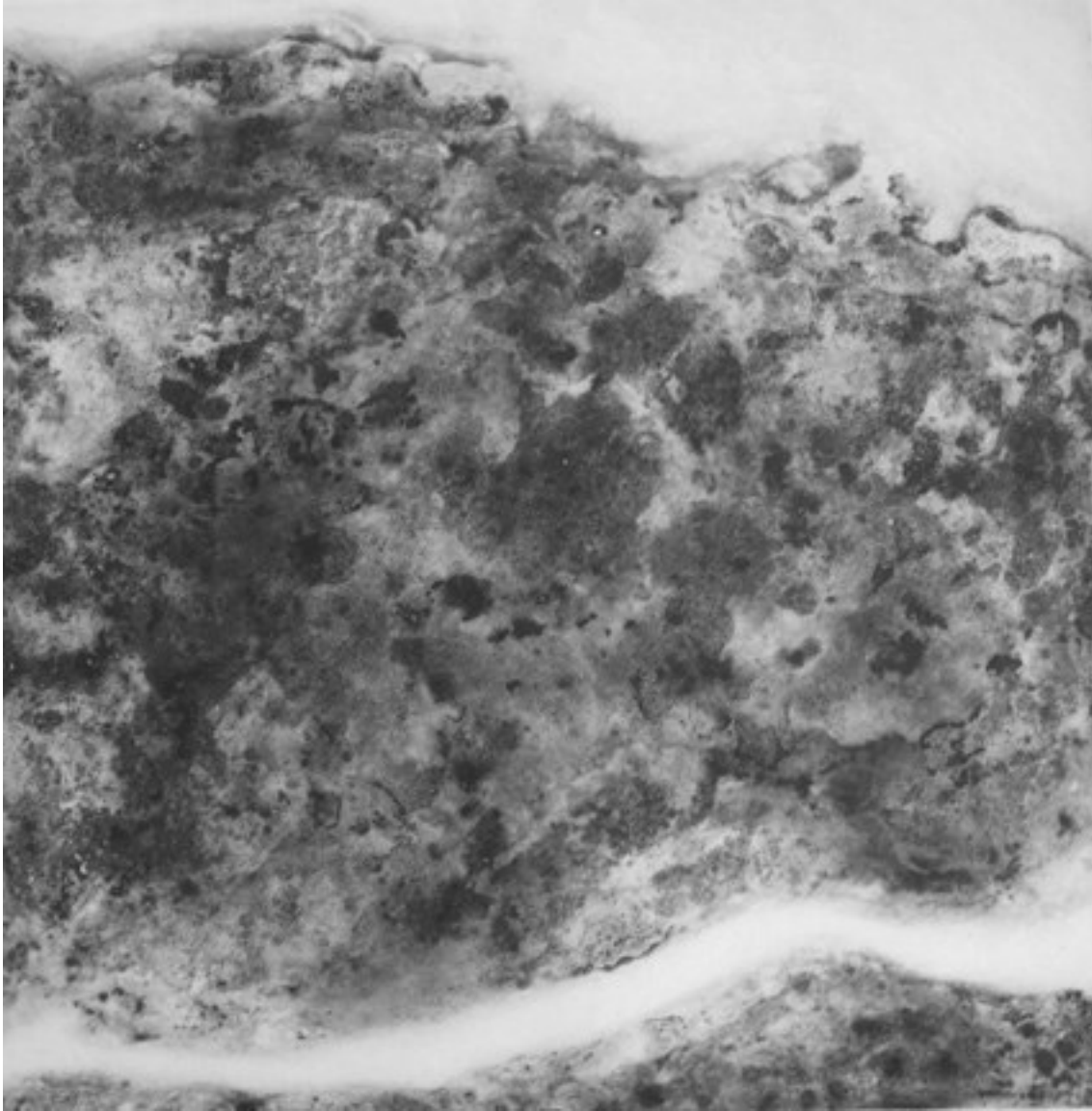


Anne-France FRERE

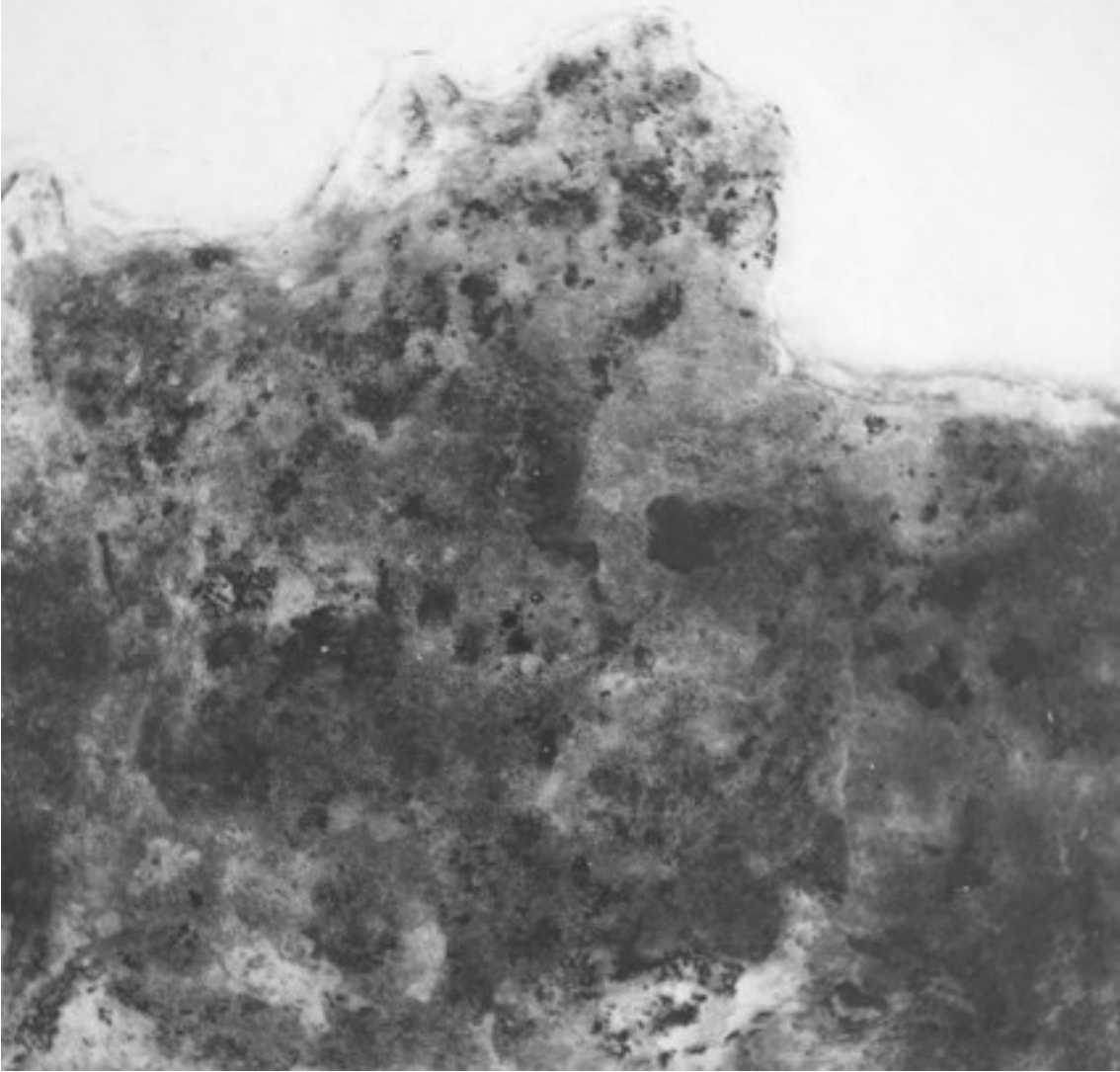
These prints were made four-by-four and can be assembled or not.
All of them are about trees in their different forms.
Even if I do a figurative work, etching allows me to escape
I play with technicity to obtain different matters



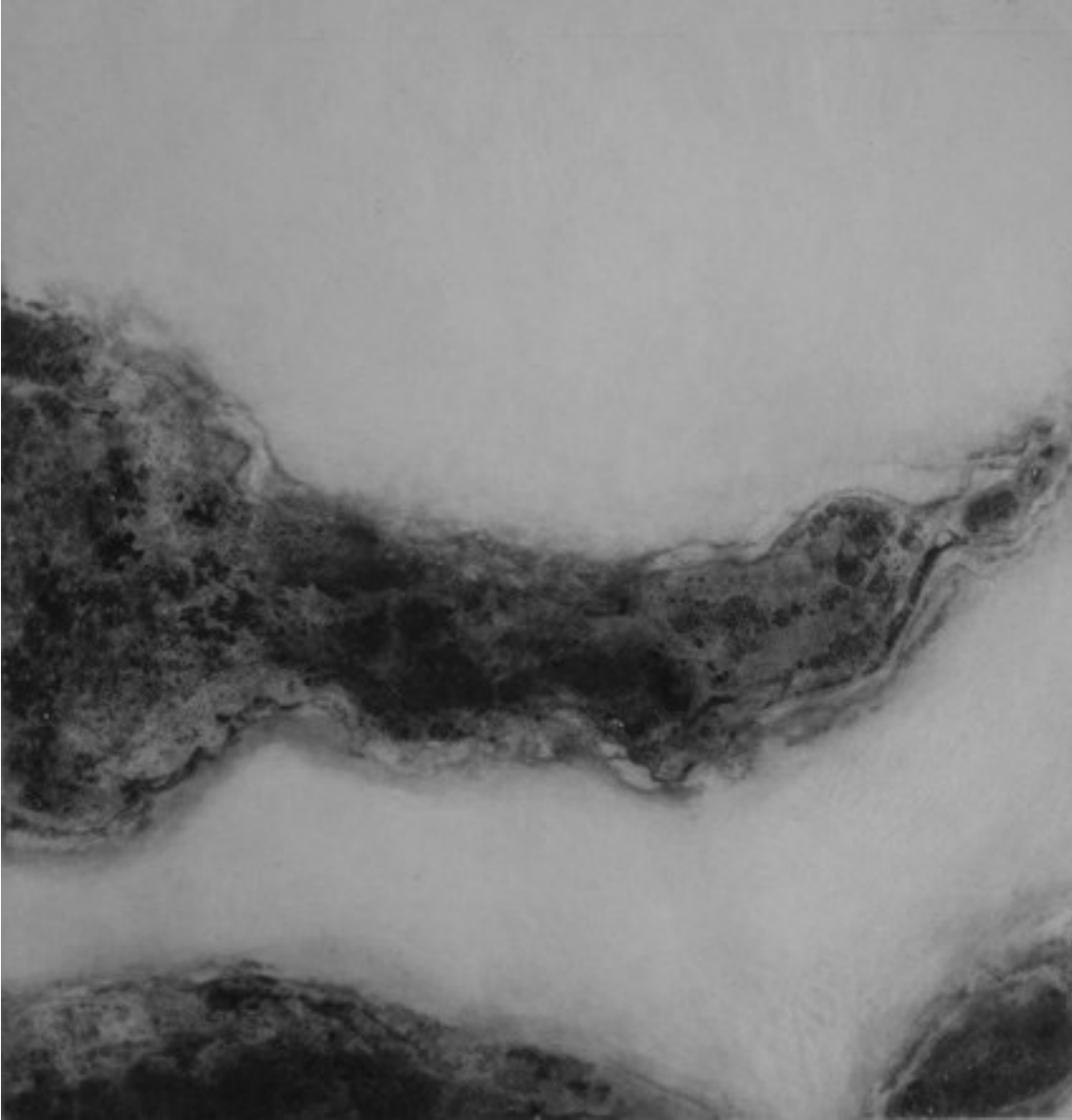
Tronc, 2009, 50/50 cm, sulphur print.



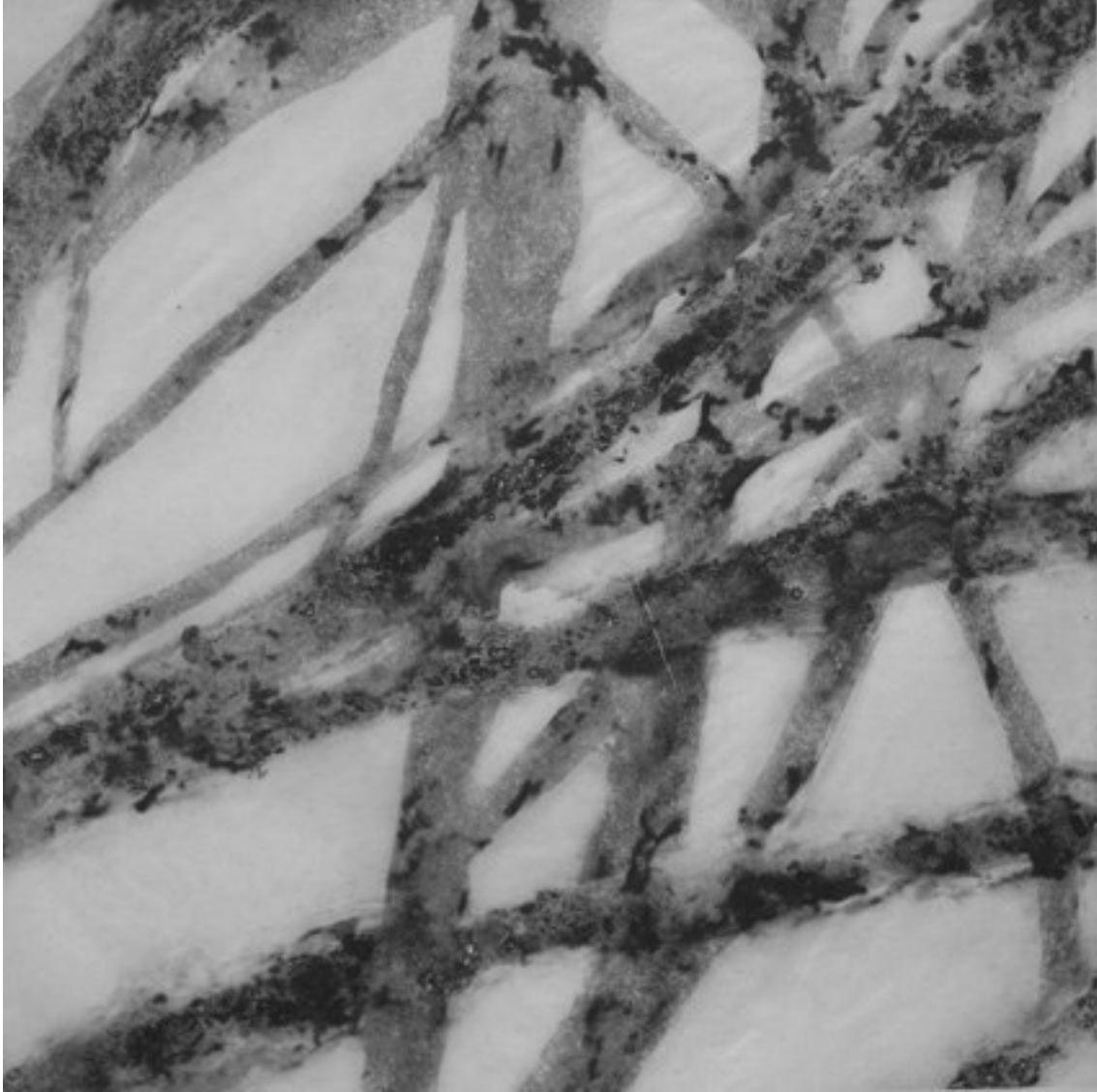
Terre, 2009, 50/50 cm, sulphur print.



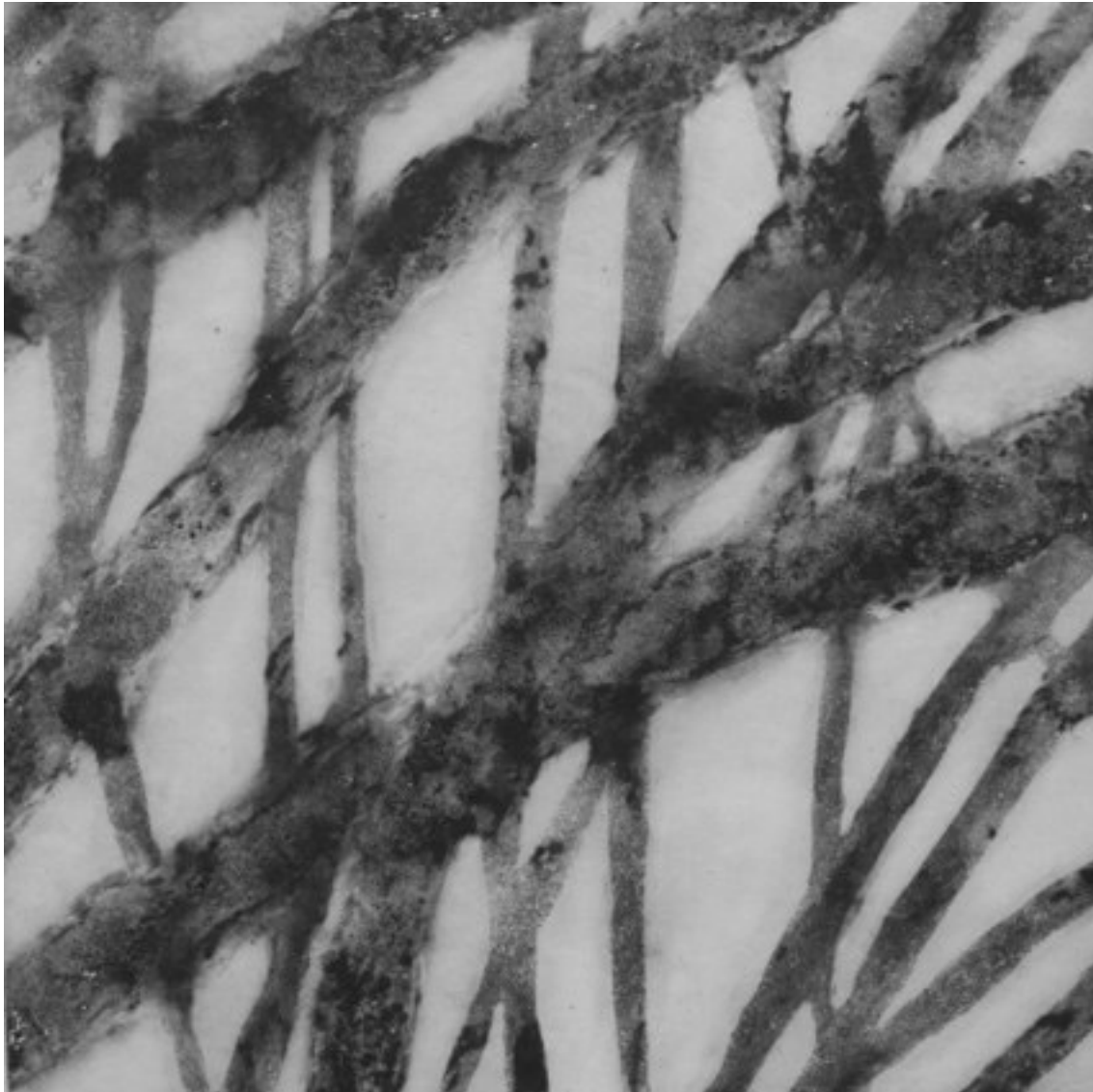
Excroissance, 2009, 50/50 cm, sulphur print.



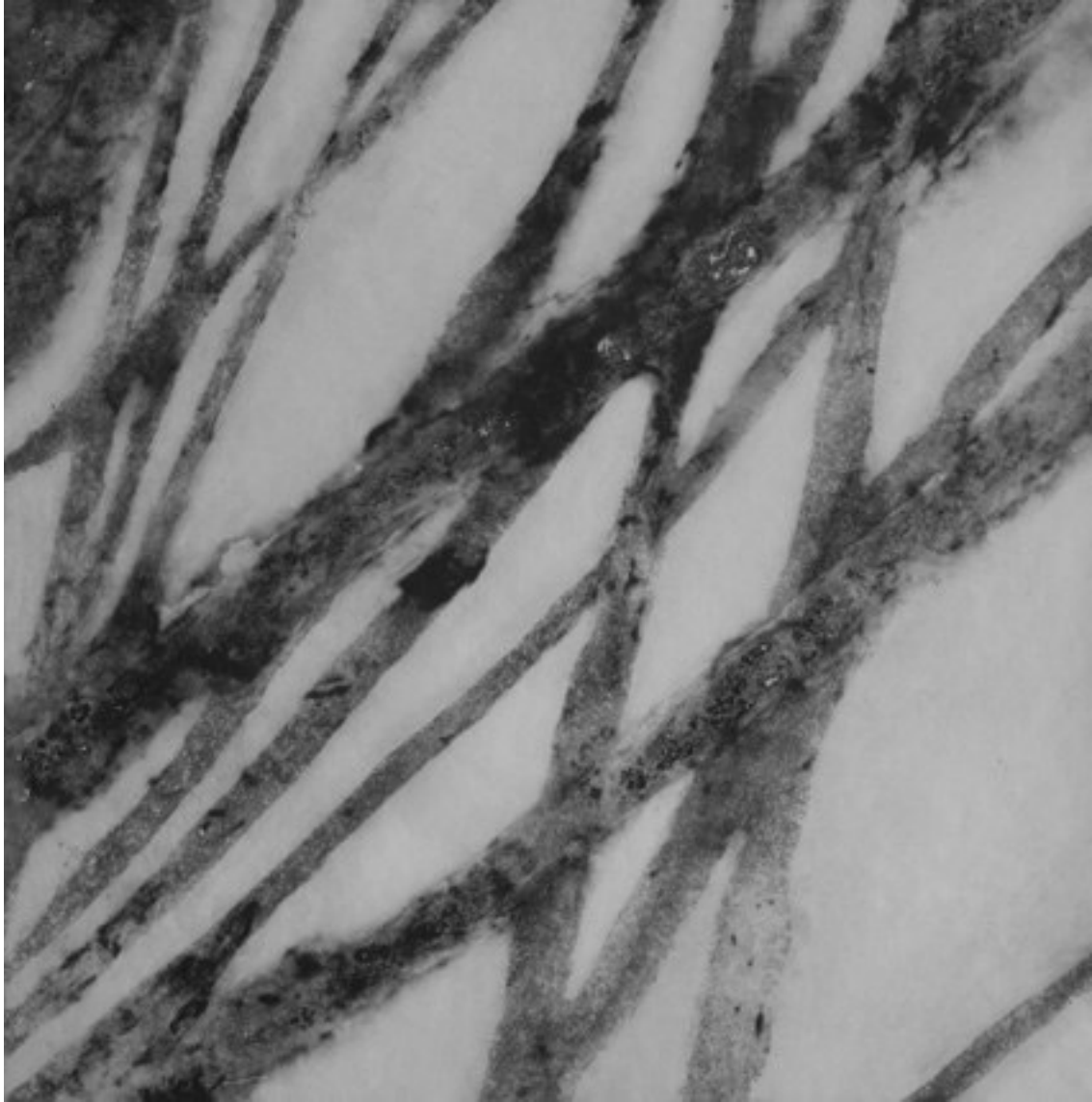
Ile, 2009, 50/50 cm, sulphur print.



Saule, 2009, 50/50 cm, sulphur and aquatint print.



Saule, 2009, 50/50 cm, sulphur and aquatinte print.



Saule, 2009, 50/50 cm, sulphur and aquatint print.



Leafs and Sky, 2008, 100/100 cm, sugar aquatint and breath.